


THIS IS SJÖGREN'S

As many as
4 MILLION
AMERICANS
have Sjögren's

with an estimated
2.5 MILLION
PATIENTS
currently
undiagnosed




9 OUT OF 10
Sjögren's patients
ARE WOMEN



It now takes an
average of
3 YEARS
to receive a

**SJÖGREN'S
DIAGNOSIS**



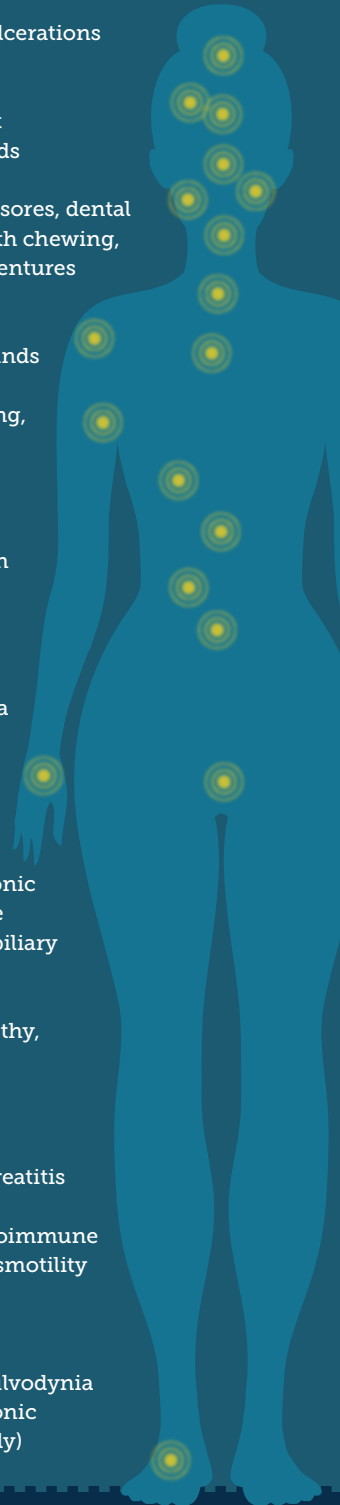
The average age of
Sjögren's diagnosis is
40 YEARS
It can occur in
all age groups



Frequency appears to
INCREASE WITH AGE

Sjögren's ("SHOW-grins")
is a systemic autoimmune
disease that affects the
entire body.

- Neurological problems, concentration/memory-loss, dysautonomia, headaches
- Dry eyes, corneal ulcerations and infections
- Dry nose, recurrent sinusitis, nose bleeds
- Dry mouth, mouth sores, dental decay, difficulty with chewing, speech, taste and dentures
- Swollen, painful parotid/salivary glands
- Difficulty swallowing, heartburn, reflux, esophagitis
- Fatigue, vasculitis, lymphoma, dry skin
- Recurrent bronchitis, interstitial lung disease, pneumonia
- Arthritis, muscle pain
- Abnormal liver function tests, chronic active autoimmune hepatitis, primary biliary cholangitis
- Peripheral neuropathy, Raynaud's
- Stomach upset, gastroparesis, autoimmune pancreatitis
- Irritable bowel, autoimmune gastrointestinal dysmotility
- Interstitial cystitis
- Vaginal dryness, vulvodynia (women only); chronic prostatitis (men only)



LEARN MORE

sjogrens.org